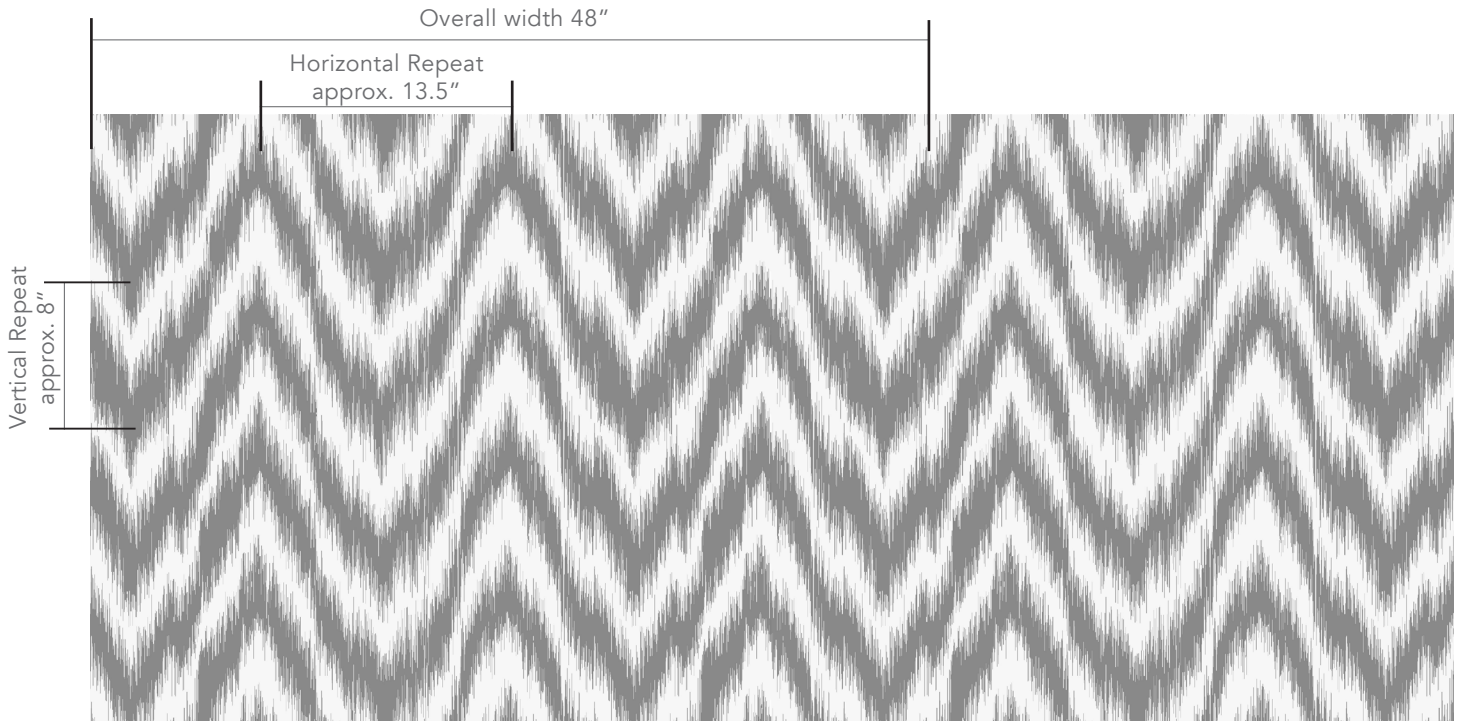


# Hanging Instructions

Tides



## CAUTION

Inspect product for major defects in construction prior to cutting or installing. Returns will not be accepted on cut panels.

## PROFESSIONAL HANGERS

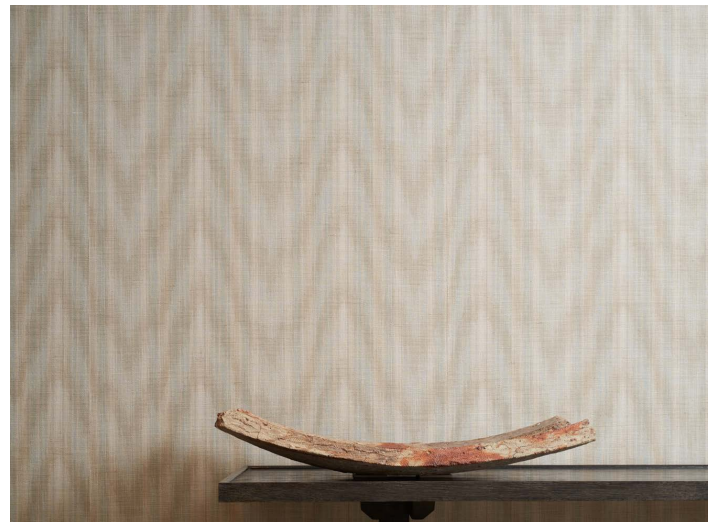
Only professional wallpaper hangers should be contracted to install Gregorius|Pineo wallcoverings. Our wallcoverings are not covered under a warranty and no guarantee is offered against color fading, shrinkage, damage, or change due to contact with any liquid.

## ADHESIVES

We suggest using a clear, non-staining, vinyl adhesive when installing our wallcoverings. Wall surfaces must be properly prepared prior to application of adhesive to the wall surface.

## TRIMMING

Our wallcoverings have not been pre-trimmed. For pattern matching trim to 41.5", approximately 3.25" in from each side.



## INSTALLATION

We recommend applying the adhesive to the wall surface only and not to the wallcovering backing. Prior to wallcovering installation, it is also recommended to lightly mist the back of the wallcovering with water. This will prevent any shrinkage or bubbles from forming after the wallcovering is adhered to the wall.

*If you have any questions, please feel free to call us directly.*