

FINEHEMP

WALLCOVERING COLLECTION



GREGORIUS | PINEO

GREGORIUS | PINEO

FINE HEMP

WALLCOVERING COLLECTION

We love giving center stage to this fiber's inherent, lustrous beauty. In our latest collection, Hemp fibers come to life in a capsule series of twelve colorways we call 'Dusk' and six other fashion-inspired tones. Dusk colors catch that alluring moment before the sun goes down and the moon rises, casting its candlelit splendor of sultry color. All in perfect harmony with the other cool and warm colorways of this refined natural weave collection.

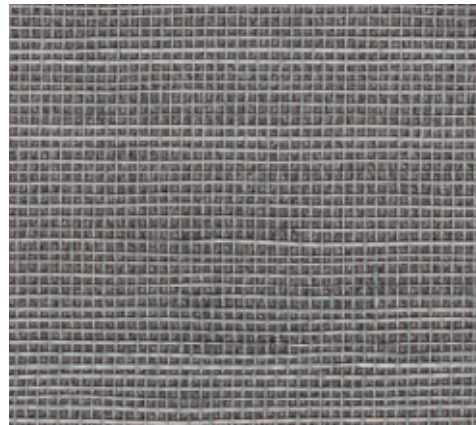
36" wide and sold in 8 yard increments only. Flammability Rating: ASTM E84 Class A.

Color is shown for reference only. Colors on screen may vary due to monitor display differences.

DUSK COLOR CAPSULE



FH-526 Nautical Dusk



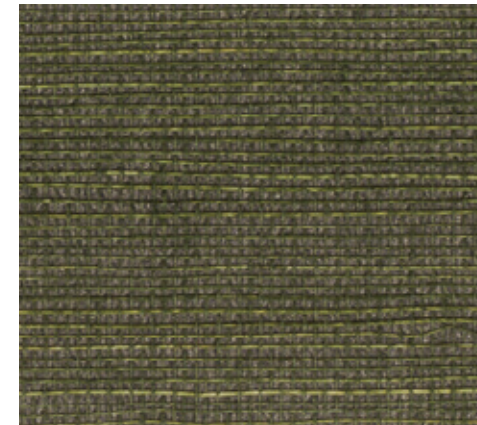
FH-527 Moonstone



FH-528 Blue Latitude



FH-531 Olive Orb



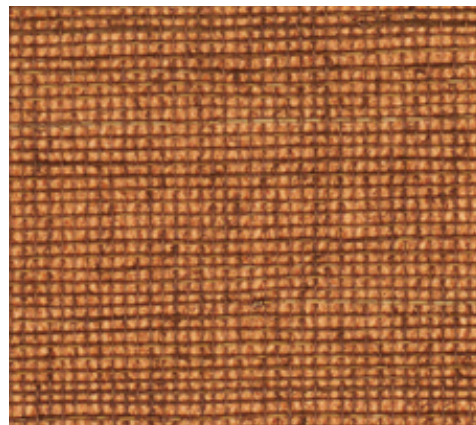
FH-532 English Forest



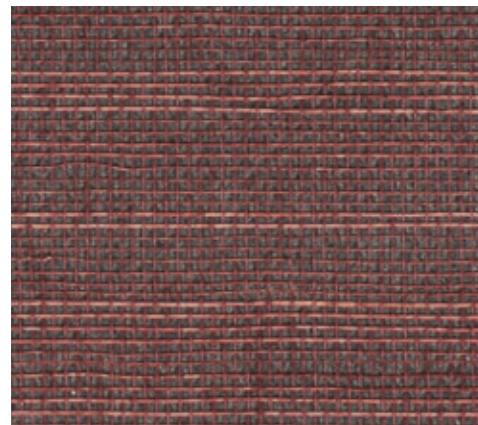
FH-533 Wood's Nymph



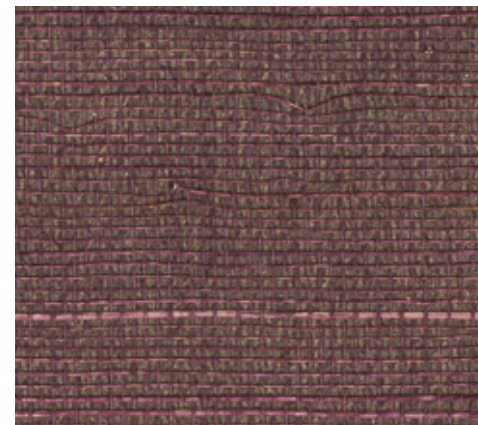
FH-534 Taupe Haze



FH-536 Burnish



FH-537 Waning Bordeaux



FH-538 Tart Plum



FH-539 Persimmon Glow



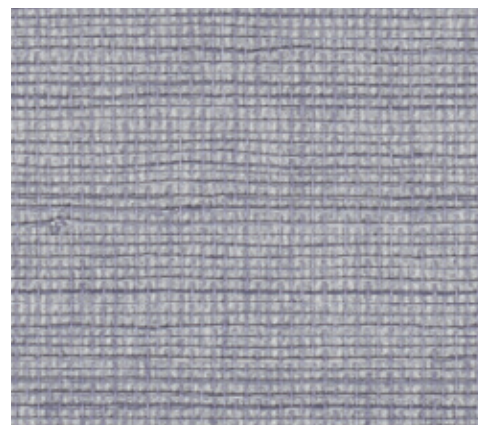
FH-540 Smokin'



FH-523 Mineral Blue



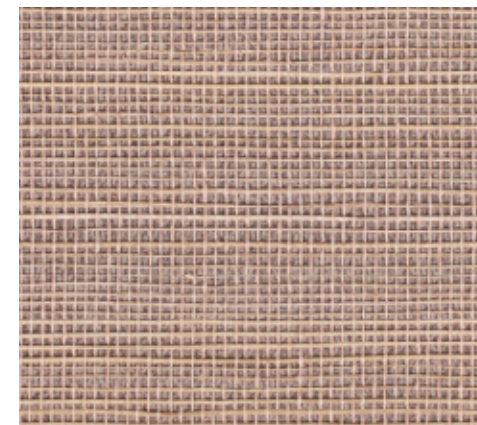
FH-524 Agave



FH-525 Out to Sea



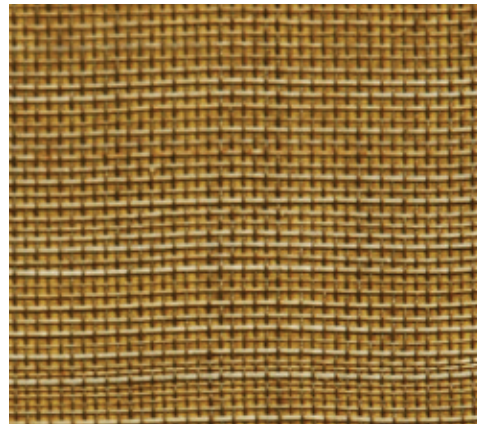
FH-529 Laurel Wash



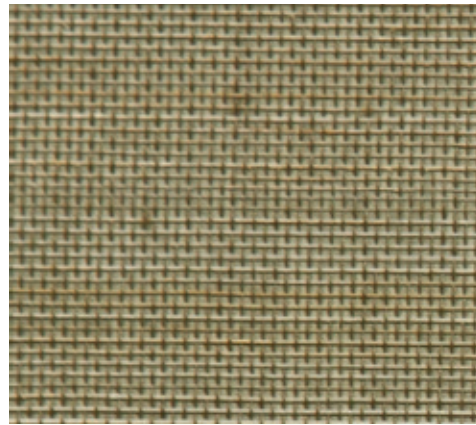
FH-530 Bare



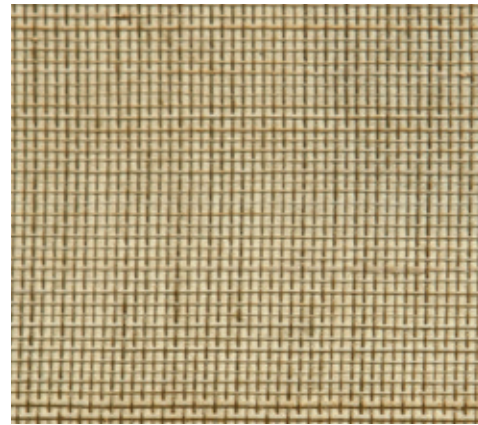
FH-535 Fired Clay



FH-500 Terra Sand



FH-501 Caper Cove



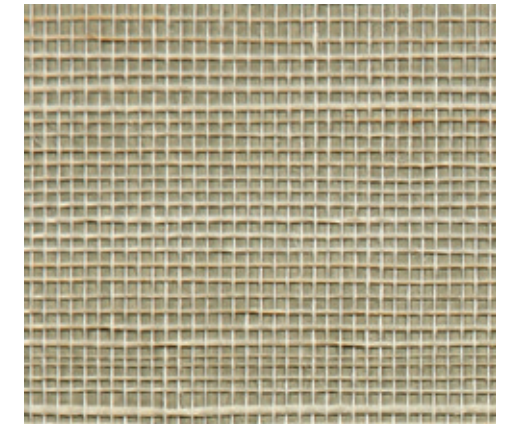
FH-502 Moonstraw



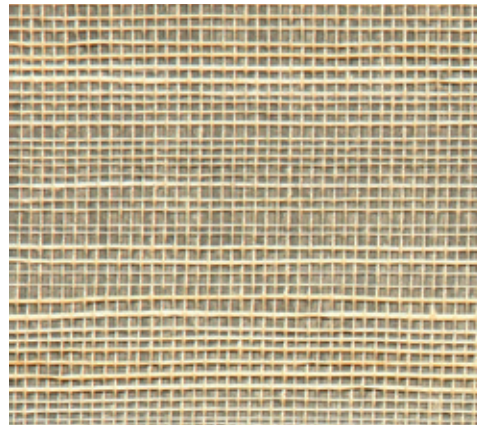
FH-503 Natural Tint



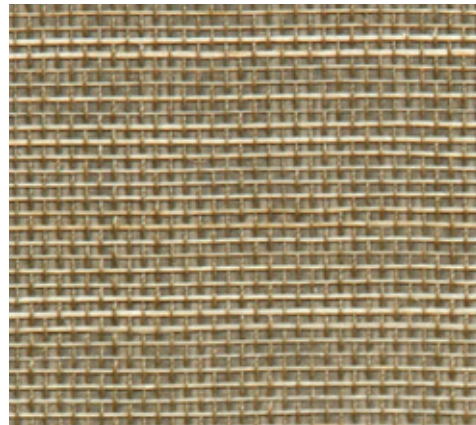
FH-504 Camel Glacè



FH-505 Misty Fog



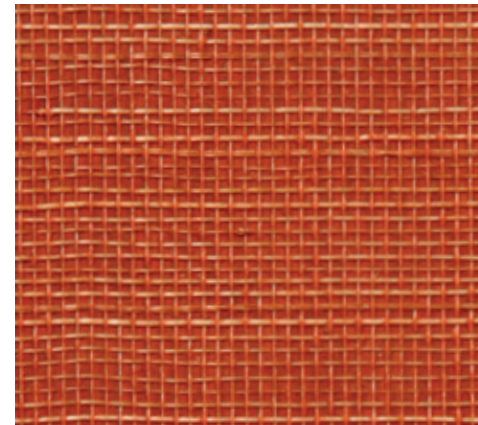
FH-506 Shimmer Bark



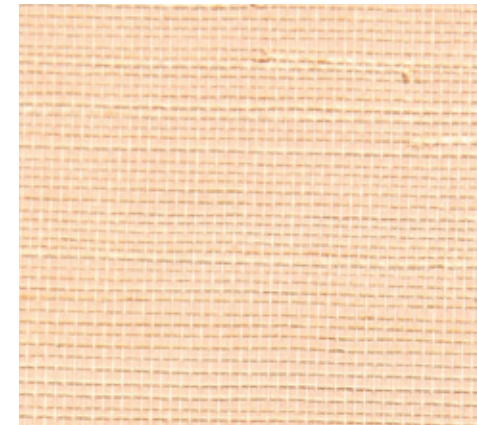
FH-507 Twilight Balsam



FH-508 Starlight



FH-509 Indian Summer



FH-511 Moon Lilly



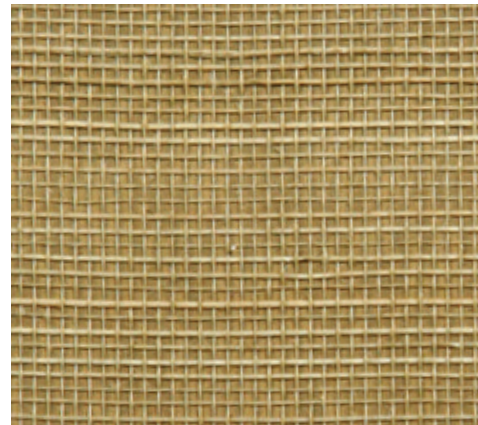
FH-513 Cabbage Rose



FH-514 Mauve Moon



FH-515 Misted Suede



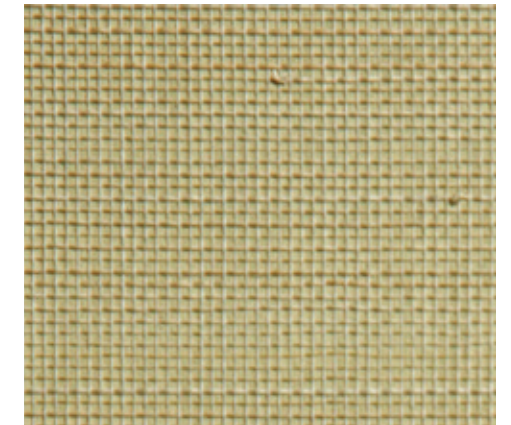
FH-516 Dark Straw Glow



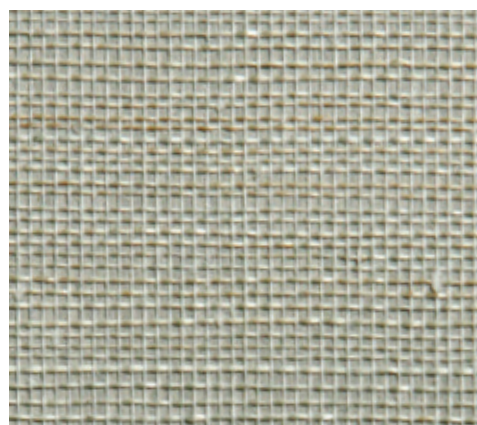
FH-517 Agave Ray



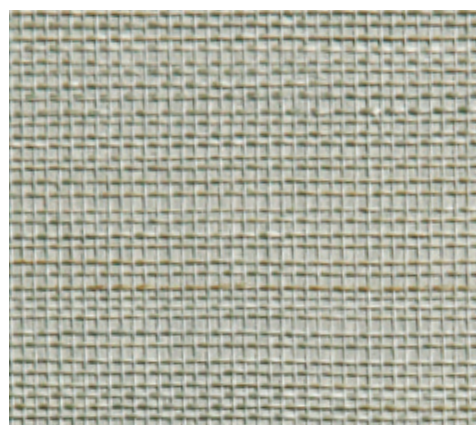
FH-518 Sand Beam



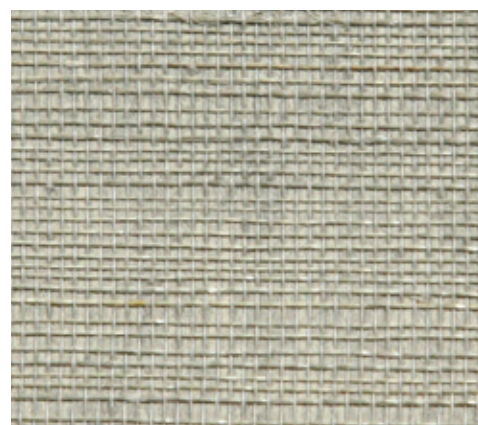
FH-519 Caper Ivory



FH-520 Bay Mist



FH-521 Summer Slate



FH-522 Lunar Gray



Register at gregoriuspineo.com to
view pricing for design professionals.

502 N. Oak Street Inglewood, CA 90302
T 800 . 421 . 4602 F 310 . 839 . 6811